

# DRONE SERVICES

“Quality Service Fosters Growth”



# A Proven Partner

**Since our inception in 1992, Foster CM Group has been a proven leader in the Program/Construction Management industry. We are proud of the record we have established in solidifying business relationships that culminate into successful projects for our clients.**

It is our mission to listen, be thoughtful and innovative managers, and invest in the growth and training of our professional staff to bring quality to the built environment, all while providing a pragmatic approach to risk mitigation and problem solving and maintaining the highest level of trust, honesty, and integrity. Our focus is to ensure that each project is carried out thoughtfully to achieve schedule, budget, and quality. Our resolve is to create a collaborative project environment in which programming, planning, scheduling, economy of resources, quality, and safety are not only goals, but realities.

Foster CM Group's strength lies in our understanding of clients' needs. Our professionalism, our experiences on both small and large projects and our managerial approach all continuously place emphasis on controlling the cost, schedule and quality of the project. We are team oriented but direct and practical when it comes to managing and solving problems. We believe that "quality service fosters growth."







*Licensed Pilot,  
PJ Foster*

# Drone Photography

Foster CM Group also provides drone photography and video solutions for the A/E/C industry. Whether you need to record construction progress or secure images for marketing, our licensed drone pilot can serve your needs. We can also provide 2D and 3D mapping, stockpile quantity measurements, and volume, linear distance, and specific locations using coordinates.

Capitalizing on the progress of your construction projects via drone services offers a dynamic and extensive visual. Drone solutions can serve as time-lapsed progression or documentation of site conditions for analysis and quicker decision making.

Additionally, drone photography can achieve dramatic photos and video footage of your finished project for any of your marketing and media needs.

Our pilot is FAA, Part 107 certified and fully insured. We are committed to delivering the best aerial imaging to assist in managing resources efficiently and help clients save time and money.

## Services

- Construction Site Monitoring
- Drone Inspection Services
- Orthomosaics & Aerial Survey
- Data Capture & Analysis (Produce interactive 3D models of construction sites)
- Aerial Photography
- Drone Video

# Capabilities

- *Showcase a Completed Project*
- *Track Construction Progress*
- *Gather Important Data*
- *Use as a Communication Tool*
- *Provide previously hard to capture unique perspectives and angles*

Drone services can save valuable construction time, improve communications between stakeholders, and reduce costs, as well as provide stunning photos and video for marketing purposes.

*Drone capabilities include:*

- Tracking site progress using 4k video/photos/panoramas
- Remote virtual inspections
- Creating high resolution 2D/3D orthomosaic maps or models allowing clients to view elevation data, monitor plant health, generate contour lines and track changes of an area or project over time
- Producing volume quantities and measurements with before, during, and after construction photography.
- Providing Normalized Difference Vegetation Index (NDVI) to analyze remote sensing measurements and assess whether or not the target being observed contains live green vegetation.



# Track Site Progress

Track site progress using 4k video, photos and panoramas of your work in progress.

- Capture job site data
- Share a visual timeline with all stakeholders
- Detect plan defects and deviations for correction by comparing actual conditions to pre-construction designs
- Analyze and mitigate risks
- Inspect your entire job site safely

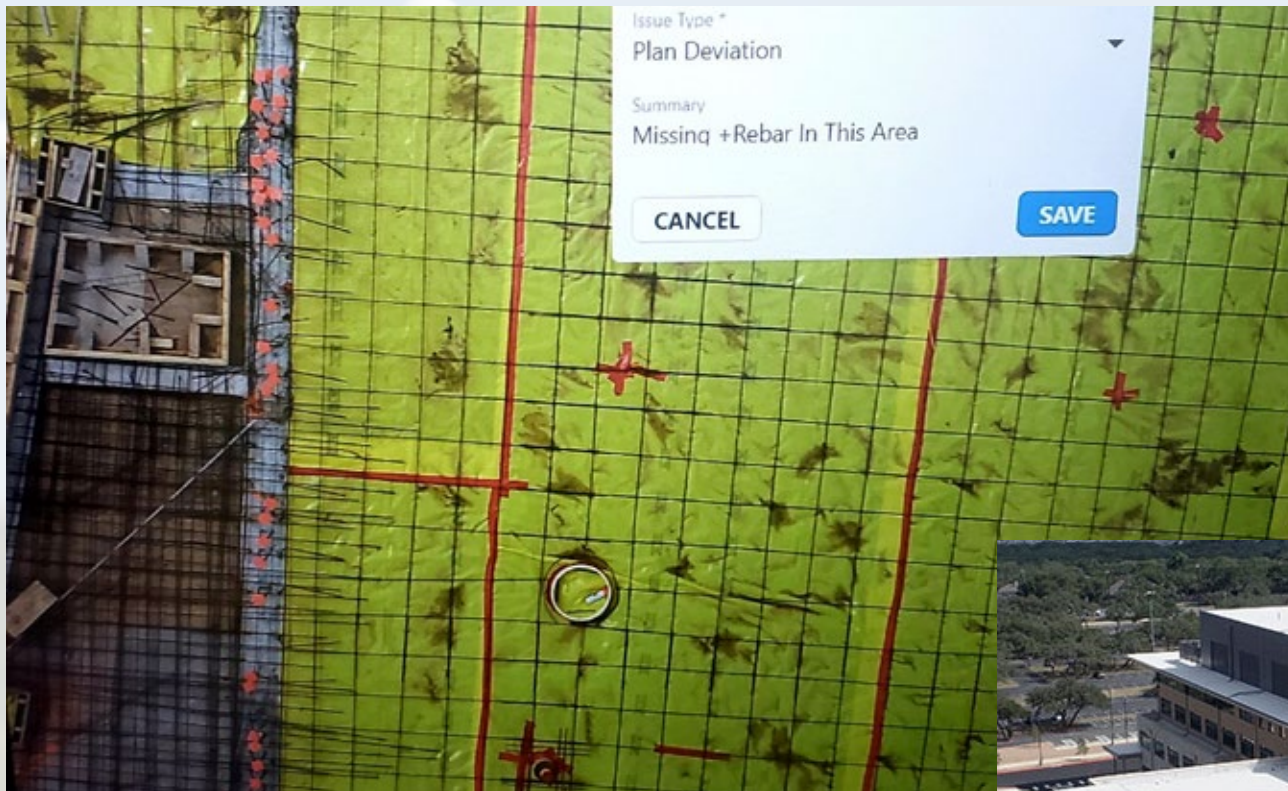


*San Antonio Zoo  
Parking Garage*



# Remote Virtual Inspections

Remote inspections are becoming increasingly popular and common in the building industry. Used as a means for monitoring progress on a consistent basis, Foster CM Group can provide remote inspections and obtain detailed overviews of your project. By capturing drone data to perform surveys, conduct inspections, and document every job site you can save time, improve project communication, and reduce cost.

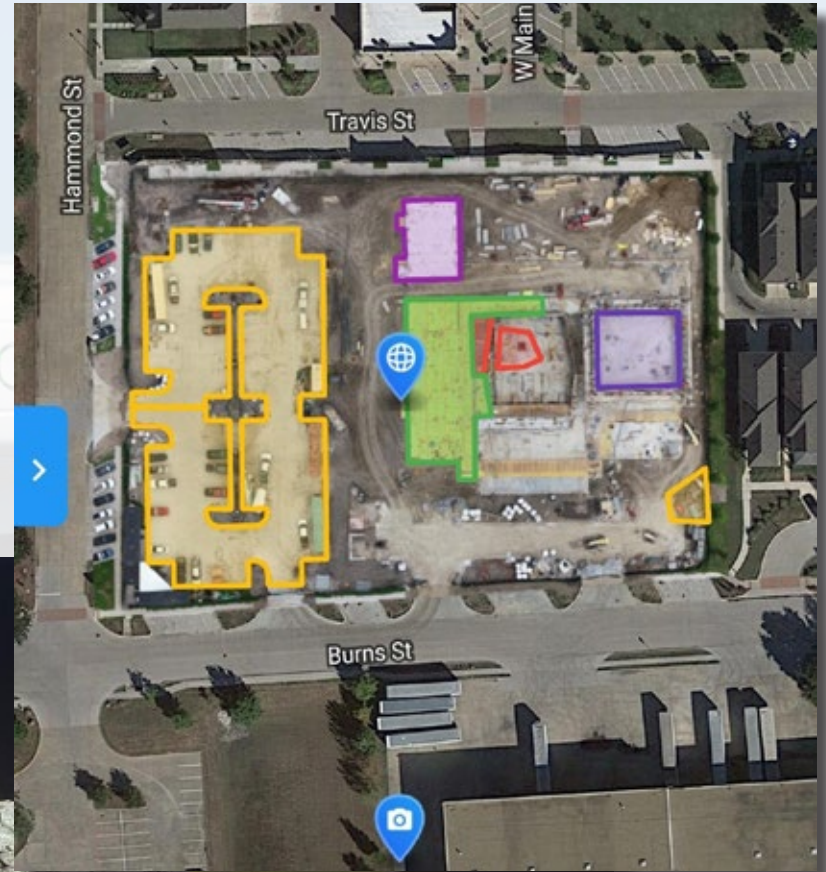
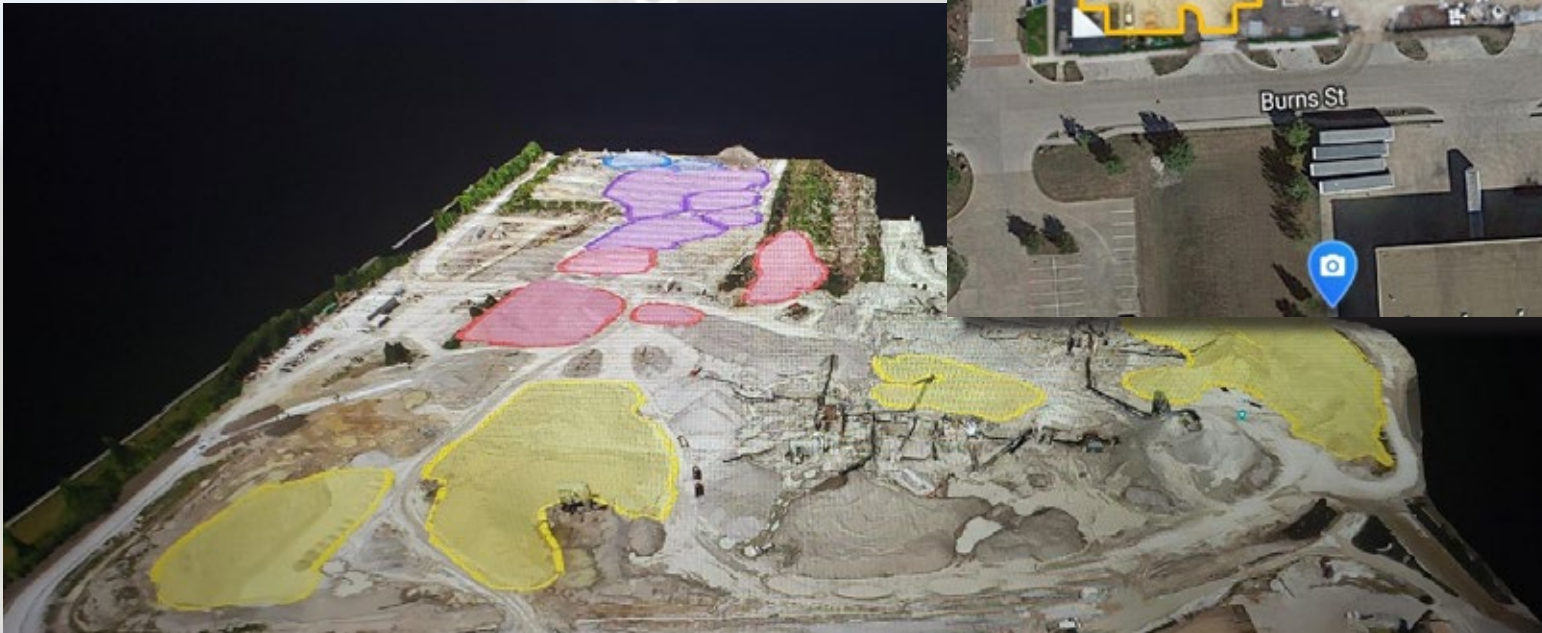




# High Resolution 2D/3D Orthomosaic Maps

High resolution 2D/3D orthomosaic maps or models are robust tools allowing for a variety of uses. With these maps clients can:

- View Elevation Data
- Monitor Plant Health
- Track Changes Over a Period of Time
- Generate Contour Lines



# Volume Quantities and Measurements

Drones can supply cost-effective and highly accurate measurements to analyze volumes on any terrain. Volume calculations can provide the cut and/or fill needed (volume metric quantities) on a project site, and allow for change-over-time mapping as these quantities change -- providing before, during, and after quantities.

With each map, we can look for quantities in the same area of previous maps and show the change in cut, fill and volume measurements over time. We can even download the data as a CSV file.

☰

Earthworks Cut/Fill Example

←

Edit

Title

Stockpile #5

🔒

🗑️

May 6, 2019 to Base Plane

Cut

35483.7 y<sup>3</sup>

Fill

254.9 y<sup>3</sup>

Net Volume

-35228.8 y<sup>3</sup>

Material Volume

35228.8 y<sup>3</sup>

Mass

23691.4 ton

Value

\$15,852,959.09

Area

2.181 acres

Material

C 11's

▼

Surface

Digital Surface Model

ⓘ

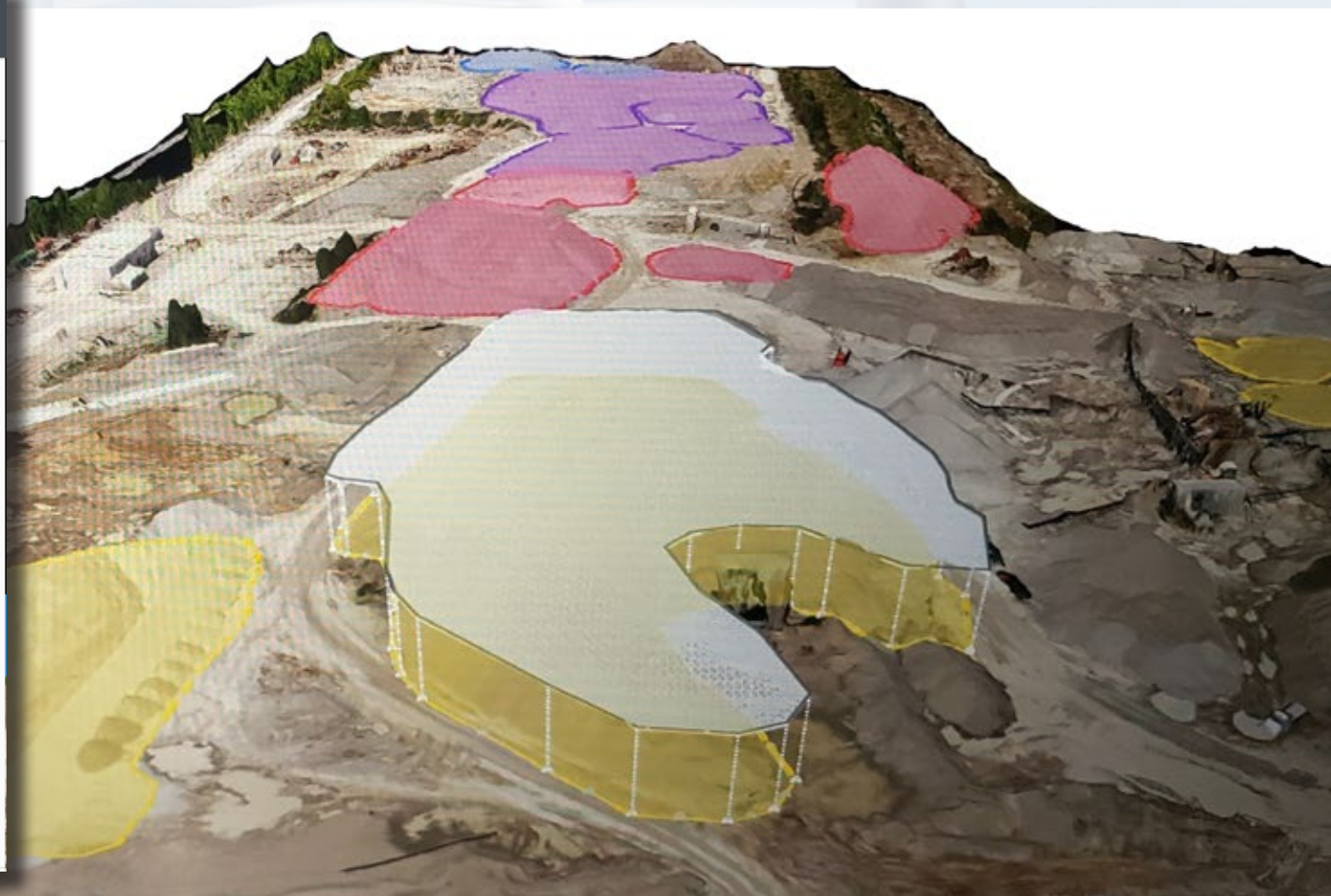
▼

Base Plane

Linear fit

ⓘ

▼

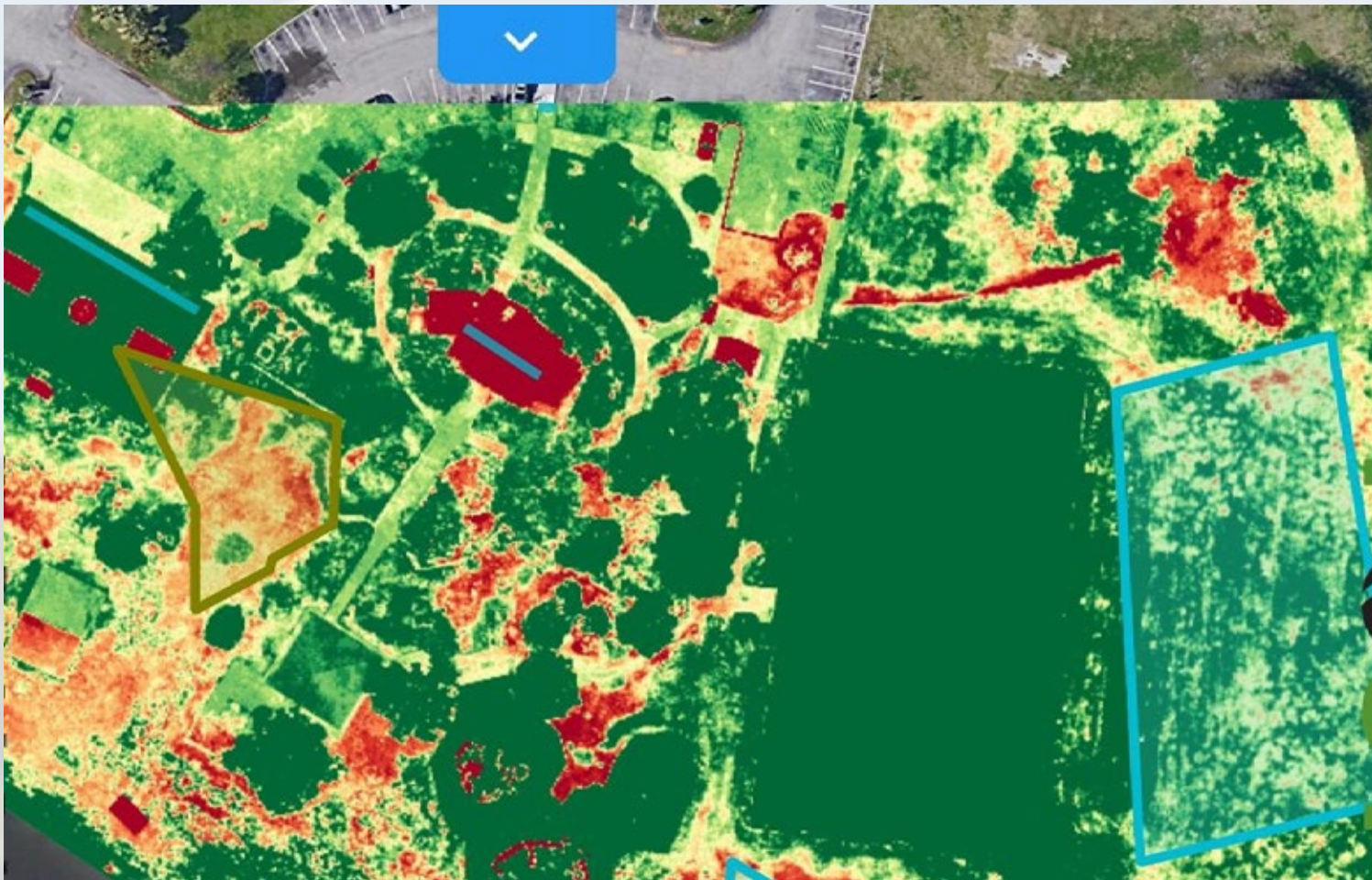




# Normalized Difference Vegetation Index (NDVI)

Analyze remote sensing measurements and assess whether or not the target being observed contains live green vegetation.

NDVI can be used to estimate crop yields, and performance, as well as percentage of ground cover, photosynthetic activity of the plants, surface water, leaf area index and the amount of biomass.



# CONTACT US

Drones have changed the way we do business, the way we provide information, and even our communications. Foster CM Group supplies a whole new realm of value and reliable data for your projects.

For more information about the services we provide, please contact us at 210.804.1004







8610 N. New Braunfels Ave., Suite 606  
San Antonio, Texas 78217  
Ph: 210.804.1004 | Fax: 210.828.5484

**FOSTERCMGROUP.COM**

#### Corporate Office

8610 N. New Braunfels Ave, Suite 606  
San Antonio, Texas 78217  
210.804.1004

#### Austin

13785 Research Blvd, Suite 125  
Austin, Texas 78750  
512.655.2210

#### Dallas

One Galleria Tower  
13355 Noel Road, Suite 1100  
Dallas, Texas 75240  
972.851.1003

#### Fort Worth

5601 Bridge Street, Suite 347  
Fort Worth, Texas 76112  
817.586.4397

#### Houston

700 Milam, Suite 1300  
Houston, TX 77002  
713.353.4742

#### Orlando

6900 Tavistock Lakes Blvd, 4th Floor  
Orlando, Florida 32827  
321-320-9824

#### Phoenix

One Renaissance Tower  
2 North Central Avenue, 18th Floor  
Phoenix, Arizona 85004  
602.533.2833

#### Seattle

506 2nd Avenue, Suite 1400  
Seattle, Washington 98104  
206.489.5656

#### Denver

999 18th Street, Suite 3000  
Denver, CO 80202  
303.357.4888